



KANSAS GEOLOGICAL SOCIETY

BULLETIN

Volume 91 Number 2

March—April 2016

Established 1925

IN THIS ISSUE

Profile:

Tom Hansen

Page 10

**Geology of the Lansing-Kansas City
Group in the O'Connor Field,
Stafford County, Kansas**

Page 11

Banquet Crowd Photos





PRESENTS A ONE DAY SHORT COURSE

"HOW TO BE AN INDEPENDENT"

Cost: \$25.00

(Full-time college students can attend at no charge with current student ID*)

When: Thursday April 7, 2016, 8:30am-5:00pm (Doors will open at 8:00am)

***Place: OCGS Devon Geoscience Center
10 NW 6th Street, Oklahoma City, OK 73102***

RESERVATIONS MUST BE SUBMITTED BY 12:00 NOON Friday April 1, 2016

The Oklahoma City Geological Society, Society of Petroleum Engineers, Society of Geophysicists, and Society of Independent Professional Earth Scientists are pleased to announce a one-day educational seminar focused on how to start and operate a successful independent oil & gas company. This seminar is designed for Geologists, Landmen, Engineers and anyone else who is interested in running their own business. The seminar will include specific information concerning working mature, complex areas. Several successful professionals and business owners will share their experiences and provide advice. This is the perfect opportunity to learn from those that have walked that path and succeeded. Attendees will be given materials on a thumb drive, including forms, sample letters and other valuable information which you need to get your new business started.

Speakers will include:

- John Brett - Introduction and insight
- Lance Ruffel - Specifics about how to work and be successful
- Ron Arvine - Equipment and buying wells
- Joe Brevetti - From engineer to running an oil company
- Mike Pollock - Techniques and networking
- Mike Smith - Case studies
- Brett Sanger - Setting up your LLC
- and others

To register: <https://www.ocgs.org/events/> by E-mail: cjones@ocgs.org, or by phone: 405/236.8086 x17.

*** Students will need to contact Chelsey at the OCGS office to register.**

PARKING IS FREE & LUNCH IS INCLUDED

Note that attendance without reservation will not be possible. Reservations must be cancelled by Friday April 1, 2016 at noon to avoid being charged. Thank you for your consideration.

Table of Contents

Features

Member Profile	10
Geology of O'Connor Field.....	11

Departments & Columns:

KGS Tech Talks	4
President's Letter	7
Advertiser's Directory	8
From the Manager.....	9
Professional Directory	19 & 20
Exploration Highlights	24 & 25
Kansas Geological Foundation Memorials.....	26

ON THE COVER:



Some crowd shots taken at the annual Banquet

CALL FOR PAPERS

The Kansas Geological Society Bulletin, which is published bimonthly both in hard-copy and electronic format, seeks short papers dealing with any aspect of Kansas geology, including petroleum geology, studies of producing oil or gas fields, and outcrop or conceptual studies. Maximum printed length of papers is 5 pages as they appear in the Bulletin, including text, references, figures and/or tables, and figure/table captions. Inquiries regarding manuscripts should be sent to Rebecca Radford, manager@kgslibrary.com or mailed to 212 N. Market, Ste. 100, Wichita, KS 67202. Specific guidelines for manuscript submission appear in each issue of the Bulletin, which can also be accessed on-line at the Kansas Geological Society web site at <http://www.kgslibrary.com>

SOCIETY Technical Meetings

2016 Technical Talks

March 1— **“Yes, Humans Are Causing Earthquakes”** - Justin Rubinstein, USGS Research Geophysicist (This will be streamed video)

March 15— **“Sequence Stratigraphy”** - (video) David T. Allison, Ph.D. University of South Alabama.

March 29— **“Exploring Channels and Valley Fill Systems”** - (video) SIPES Foundation (Steve Sonnenberg) - The Stewart Field, Finney Co., Kansas is discussed in detail.

April 19 — **“The Search for New Exploration Plays... When Only the Best will Do”** - Julie Garvin, President of Roxanna Oil

April (TBA) **“Fort Hays Student Presentations”**

May 30— **“WSU Student Presentations”** - Larry Richardson Petroleum Class Field Studies

Please remember to check the website for the most up to date information on Technical Talks
<http://www.kgslibrary.com/techtalks.cfm>

For More Information or suggestions of speakers please contact Dave Clothier: dave@mccoypetroleum.com

*Tech Talks are held at Landmark Square
212 N. Market—4th floor
In the Wisdom Center*



Note: For those geologists who need 30 points to renew their licenses, there will be a sign-in sheet at each presentation and also a certificate of attendance.



BOARD OF DIRECTORS

PRESIDENT

Tim Hellman

PRESIDENT-ELECT

Paul Ramondetta

SECRETARY

Wesley Hansen

TREASURER

Charles Brewer

DIRECTORS

Frank Mize

Paul Gunzelman

Toby Eck

ADVISORS

Jon Callen

Tom Hansen

COMMITTEE CHAIRMEN

Advertising

Kent Scribner

Advisory

Jon Callen

Tom Hansen

Annual Banquet

Bob Bayer

Budget Committee

Chuck Brewer

Bulletin

Rebecca Radford

Continuing Education

Dave Clothier

Distinguished Awards

Frank Mize

Environmental

Kent Matson

Field Trip

Larry Skelton

Fishing Tournament

Randy Teter

Future Plans

Chuck Brewer

Golf

David Barker

Historian

Larry Skelton

Investment

Chuck Brewer

Library

Ted Jochems

Roger Martin

Membership

Larry Friend

Nomenclature

John H. Morrison, III

Picnic

Wes Hansen

Public Relations

Robert Cowdery

Shooting Tournament

Larry Richardson

Technical Program

Dave Clothier

Ticket Sales

Bill Shepherd

A.A.P.G. DELEGATES

Ernie Morrison
2018

Douglas Davis
2018

BULLETIN STAFF

EDITOR

Ernie Morrison (316) 264-6366

ADVERTISING

Kent Scribner
Stelbar Oil Corp. (316) 264-8378

PROFILES/MEMORIALS

Robert D. Cowdery
Consultant (316) 685-2299

EXPLORATION HIGHLIGHTS

John H. Morrison, III
Independent O&G (316) 263-8281

STATE SURVEY

Rex Buchanan
KS Geological Survey (785) 864-3965

SOCIETY NEWS

KGS Library (316) 265-8676

EDITOR EMERITUS

Wes Hansen (316) 263-7313
Larry Richardson (316) 262-8427

K.G.S. LIBRARY

PHONE 316-265-8676 FAX 316-265-1013

email: frontdesk@kgslibrary.com or

Web: www.kgslibrary.com

LIBRARY MANAGER

Rebecca Radford 265-8676

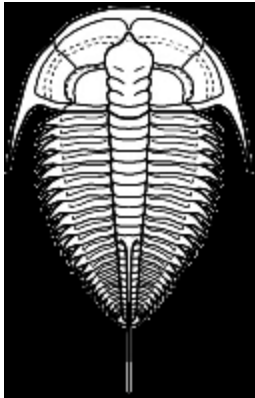
manager@kgslibrary.com

The KGS *Bulletin* is published bi-monthly by the Kansas Geological Society, with offices at 212 North Market, Wichita, Kansas 67202 Copyright 2016, The Kansas Geological Society. The purpose of the *Bulletin* is to keep members informed of the activities of the Society and to encourage the exchange and dissemination of technical information related to the Geological profession. Subscription to the *Bulletin* is by membership in the Kansas Geological Society. Limited permission is hereby given by the KGS to photocopy any material appearing in the KGS *BULLETIN* for the non-commercial purpose of scientific or educational advancement. The KGS, a scientific society, neither adopts nor supports positions of advocacy, we provide this and other forums for the presentation of diverse opinions and positions. Opinions presented in these publications do not reflect official positions of the Society.



Twenty-two Trucks Serving
Kansas—Colorado—Texas—Nebraska—Illinois

DST's
Back Pressure testing (G1 & G2)
Slick line services using the same Weatherford
Electronic Pressure Gauges used on DST's



1-800-728-5369
FAX 1-785-625-5620

www.trilobitetesting.com
trilobite@eaglecom.net

SHOPS LOCATED IN:
Hays, KS
Scott City, KS
Pratt, KS
Hugoton, KS
Oberlin, KS
Clay City, IL

CAN YOU NAME THE CRITTER?

Sponsored by Trilobite Testing, Inc.

Is your paleo up to date?

If you know the name of the trilobite,
submit your guess via e-mail to
manager@kgslibrary.com

Remember that *Trilobite Testing* is
sponsoring your efforts, so be sure to thank
Paul Simpson the next time you see him.

CONGRATULATIONS!!

Frank Mize correctly identified

The last one as: *Ceratonurus*
Bulletin committee members and PhD's in
Paleontology are prohibited from entering.



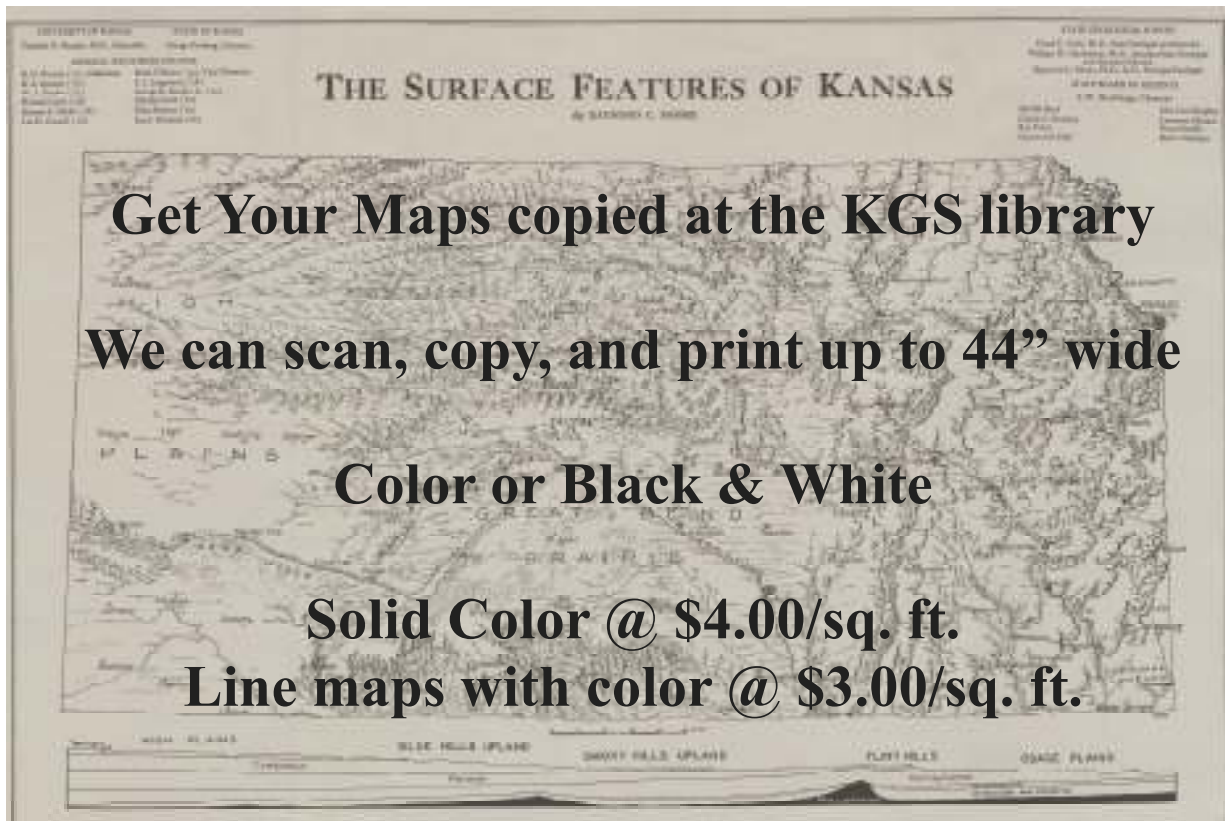
Get Your Maps copied at the KGS library

We can scan, copy, and print up to 44" wide

Color or Black & White

Solid Color @ \$4.00/sq. ft.

Line maps with color @ \$3.00/sq. ft.



President's Letter

Dear KGS Members,

The KGS Banquet held on January 29th was very well attended and I want to thank all of you who were able to attend. And as usual, Morris Korphage did an excellent job of being our Master of Ceremonies for the evening and giving a great testimony of why Doug Davis was so deserving of the Honorary Membership Award. Doug's relentless help, enthusiasm, and knowledge of the Library and our Society are truly appreciated.

Outgoing President Mr. Frank Mize awarded Mr. Leonard Margheim with a Distinguished Service Award for his many years of service in Kansas helping hundreds of geologists with electric log interpretations. Most, if not all of us, have had Leonard in our offices pouring over the logs, to help us in determining which formations to perforate or describe in detail, exactly what the log trying to tell us. He was also instrumental in preserving many of the old Lane Wells and Dresser logs over the years and finding a way to donate many of those logs to the KGS Foundation to be incorporated into our Library.



Photo by A.J.

Dave Clothier has also been busy trying to find lecturers to give talks to the KGS, but in these slow times, that has proven somewhat difficult. But he has managed to sort through our video library and find some really incredible one hour geological programs. These programs have included everything from Human Induced Earthquakes, to the formation of what is now North America, to the Earthquake in Sumatra in 2004. I think most of us have really enjoyed these, due to the fact that there seems to be more of us attending these video sessions.

Lastly, as we face an extended downturn of oil and gas prices which has caused more reductions in pay and/or personnel, whether it be a service company, wellsite geologist or an owner/operator of oil and gas leases, we need to be thankful of what we have accomplished in all the facets of our industry. But we can't ignore what has happened and currently continuing. We on the KGS Board are looking at everything that governs our existence to make sure we are able to continue to provide a service to not only our members, but to the industry as a whole.

Respectfully

Tim Hellman
President

Kansas State University
DEPARTMENT OF GEOLOGY

Graduate education for active professionals in this innovative program, workshops, site visits and distance courses help professionals advance in their careers. Whether your goal is to receive academic credit, certifications or a master's degree in geology, you'll find a path that leads to your career goals.

CHOOSE FROM SPECIALIZATIONS IN:

- ▶ Petroleum geology
- ▶ Environmental geochemistry
- ▶ Structural Geology
- ▶ Groundwater
- ▶ Exploration geophysics
- ▶ Geomicrobiology

LEARN MORE

Contact Pamela Kempton, department head, for more information at pkempton@k-state.edu. Or contact any of our program partners to learn more.

*K-State Global Campus: dce.k-state.edu
 Geology department: k-state.edu/geology
 Graduate School: k-state.edu/grad*



ADVERTISER'S DIRECTORY

	<i>page</i>
Allied Cementing Company, Inc	23
Breckenridge Exploration Company	15
Duke Drilling	23
GeoSteering	14
Global Geophysical	15
Kansas Geological Foundation	26
Kansas State University	8
Lockhart Geophysical	23
Lone Star Geophysical Surveys	16
MJ Systems	13
MBC Well logging	23
Murfin Drilling Company, Inc	23
Neuralog	15
PARAGON Geophysical Services, Inc	13
Pratt Well Service	15
Professional Directory	19-20
Tomcat Drilling	23
Trilobite Testing	6
Walters Digital Library	27
Well Enhancement Services	14

ADVERTISER'S RATES: 2016

Full Page	B&W	Color
6 issues	\$2,000	\$2,500
3 issues	\$1,080	\$1,325
1 issue	\$480	\$525
1/2 Page		
6 issues	\$1,000	\$1,500
3 issues	\$540	\$825
1 issue	\$225	\$350
1/4 Page		
6 issues	\$600	\$900
3 issues	\$325	\$525
1 issue	\$150	\$250
1/8 Page		
6 issues	\$300	\$500
3 issues	\$175	\$325
1 issue	\$75	\$185
Professional Ad (Business Card)		
6 issues	\$90	\$180

For one-time ads, call Rebecca at 316-265-8676

Log in to
 Walters Digital Library
 At
www.kgslibrary.com

Log in as our guest
 and see the Society's Database
 A convenient way to see what
 you might want to order!
 Call or email your order to:
 316-265-8676
frontdesk@kgslibrary.com

From The Manager

Dear Members,

What happened to winter? Too bad hardly anyone is drilling, there wouldn't be much issue with mud or snow this year. I hope that when you receive this Bulletin issue that we are starting to see some upward swing in the price of oil. But if not, your library is continuing to add new data to our files both on-line and processing large quantities of donated well logs into the paper files. All of this makes your library more valuable, especially for those of you who are prospecting and looking to the future. This downturn won't last forever and your library staff is working hard to have data ready for you when you need it.



Of course all of this takes money and while orders aren't flowing in like they were, we still are open for business and if you need anything copied, such as maps or other items, please remember your KGS library and bring the business to us, rather than Kinkos or some other entity.

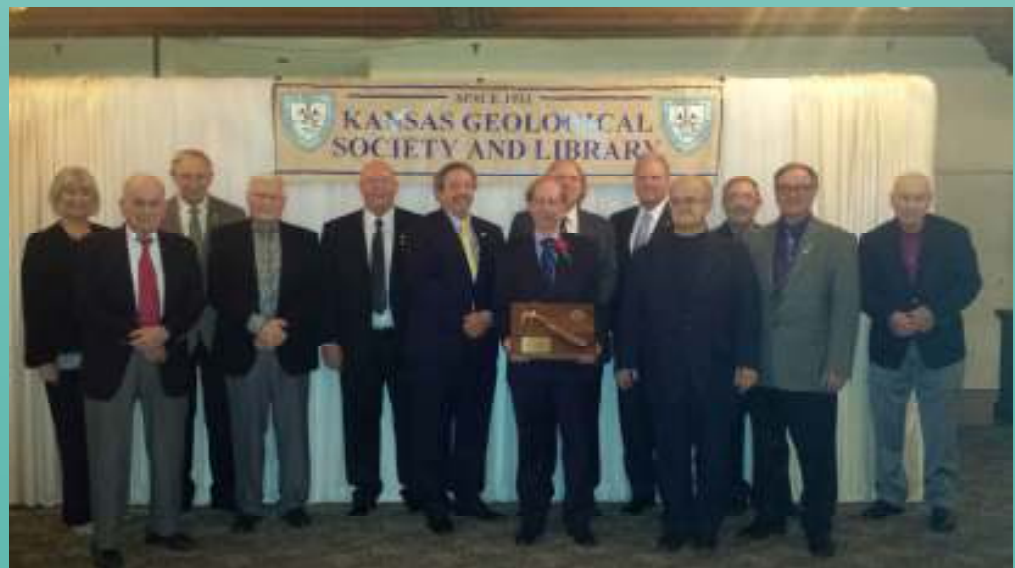
We had a wonderful Banquet again this year. Thank you to Bob Bayer for being the Chairman and making sure all went well. Doug Davis received his Honorary Membership plaque and pin and we had a wonderful tribute to him by M.L. Korphage. Entertaining as usual! Photo below.

Happy Spring to all of you and hang in there....times will get better!

Respectfully submitted,

Rebecca Radford

Manager



**Let Us Print Your Geo Reports
And Save Your Time For Finding More Oil & Gas**

Top Quality Color Printing For Our Membership

Email your files to: kgsorders@gmail.com

Profile—Thomas Hansen



This is a profile of one of the Kansas Geological Society's most prominent and active members who is currently serving on the Board of Directors as an advisor.

Tom was born in March of 1945 in Newton, Kansas. His father was a farmer and his mother a house wife. Tom has a brother, Bernie who resides in Wamego. His early education was at country schools and was completed at Peabody High School. He then attended Kansas State University, receiving a BS degree in 1967 and a MS in 1969. Among his class mates were Woody Leel, Barry Snyder, Steve Evans, and Jim Reeves. While enrolled at K-State he found the influence and instruction of Dr. Henry Beck very beneficial.

After graduation he was first employed by Sinclair Oil & Gas in Midland, Texas. After one year employment with Sinclair (ARCO), he joined Mobil Oil Corp. He then was employed by Marshall and Winston, Inc. as Exploration Manager for 4.5 years in Midland, followed by Texas West Oil and Gas for 1 year as Mid-Continent

Exploration manager. In 1980, Tom moved to Wichita where he was employed as District Geologist at American Energies Corp. Tom was then employed by Gear Petroleum for five years (2 years without pay). In 1988 he formed his own company, Bittersweet Energy Inc.

Some KGS members that Tom worked with at various companies are Alan DeGood, Brian Fisher, Ken Leblanc, Kent Crisler, Jim Hall, Dan Bowles, and Glenn Thrasher.

Tom has been a member West Texas Geological Society (President & Honorary Member), Rocky Mountain Association of Geologists, AAPG, and AIPG for over 40 years. In 2004, he was President of the Kansas Geological Society. He has been very prominent in Earth Day activities.

In August of 1965 he married Pat Burke of Council Grove and they have two daughters, Heather and Meggan and grandchildren who reside in Wichita. Outside of geological activities, Tom has enjoyed his participation as a Master Gardner. He is now an Emeritus member. His career has been influenced by local Wichita hydrogeologist, Bob Vincent. Also, Dr. Bob Walters was responsible for Tom's first client (Vulcan Chemical Corporation) as a consultant in 1989.

One activity in which Tom participates and which it is very apparent that he enjoys is Tuesday morning coffee with Fred Stump, Bill Shepherd, Jay McNeil, Jim Hall, Doug Davis, Alan DeGood, Kent Crisler and others.

Tom has found his career as Petroleum Geologist very rewarding and hasn't any plans to retire in the near future.



Geology of the Lansing-Kansas City Group in the O'Connor Field, Stafford County, Kansas

Loveness Mpanje, Petroleum Geologist at F.G. Holl Company, LLC

Introduction

The O'Connor Field is located on the southwest flank of the Central Kansas Uplift in Stafford County, Kansas (Figure 1). The field was discovered by Cities Service Oil Co. in July 1948 with their drilling of the O'Connor B-#1 well, located C SE SE of Section 8 T24S-R 15W.

Up to 2005, the field has produced —357,276 BO and —1.4 billion cubic feet (BCF) of gas (Kansas Geological Survey website). The field produces from the Arbuckle Group, and more importantly, the letter designated ("A" through "L") cyclothems in the Lansing-Kansas City Group (upper Pennsylvanian). Several workers, including Prather (1984, 1985), Watney (1980, 1995), and Heckel (1980, 1984) have described the cyclothems of the upper Pennsylvanian (Missourian Series) in Kansas and the factors that influenced their deposition. Despite years of production and the economic impact of the field, however, little is known about the specific sedimentological and diagenetic aspects of the cyclic reservoirs in O'Connor Field.

Purpose of the Study

The objective of this study was to describe and in-

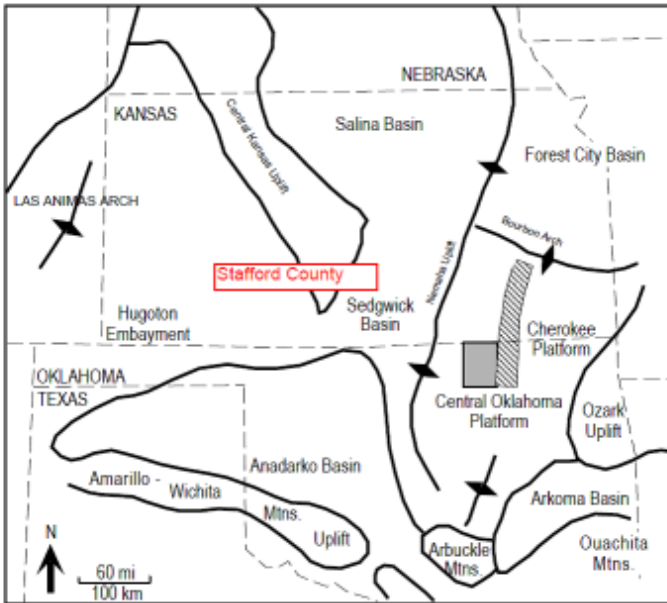


Figure 1. Tectonic Elements of the Mid-continent, and location of Stafford County, Kansas

terpret the sedimentology and diagenesis of the cyclic reservoirs in the Lansing-Kansas City section in O'Connor Field, and to relate these attributes to oil and gas reservoirs in the field. To accomplish this goal, a nearly continuous core taken in the field through the Lansing-Kansas City section was examined. This core was taken in January 1937 by Empire Oil & Refining Co. in their O'Connor #1 well, which is located in C NE NE NE of Section 17-T24S-R15W (Figure 2). The gamma ray-neutron/density log of offsetting well, #7-3 O'Connor GU-Keith by Hellar Drilling Company, Inc. and the cored section, are shown in Figure 3 (no log is available for the cored well). The core recovered 281 ft of Lansing-Kansas City section from 3644-3925 ft, which includes letter-designated zones "A" to "L".

Nature of Lansing-Kansas City Reservoirs

In the Mid-continent region, the Lansing-Kansas City Group comprises stacked cyclothems of relatively thin transgressive shales and limestones (deepening-upward), and thicker regressive (shallowing-upward) limestones (Watney,

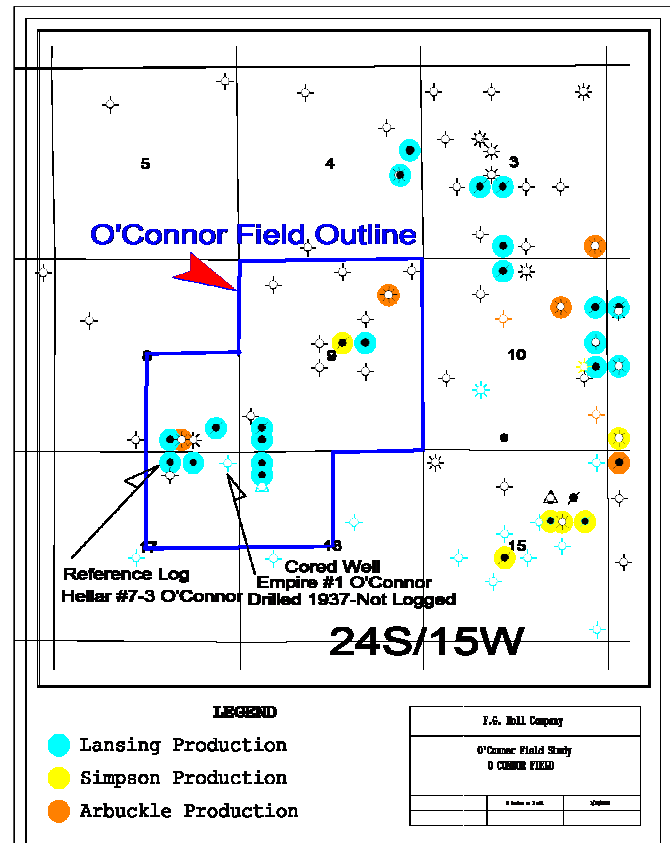


Figure 2. O'Connor Field and location of the cored well – Empire's O'Connor #1

1995). Dominantly non-marine shales and paleo sol mud rocks separate the marine phases of individual cyclothems in the section. According to Watney (1995), these cyclothems developed in response to sea-level fluctuations that likely reflected glaciations and deglaciations. In central and western Kansas and Oklahoma, these cyclothems have produced huge volumes of oil and gas. Rascoe and Adler (1983), for example, estimated cumulative oil production of 9 billion barrels, and Watney (1995) estimated over 29.6 trillion cubic feet (TCF) of natural gas production from these rocks. Watney's (1995) suggested that Lansing-Kansas City carbonate facies within individual cyclothems in some western Kansas oil fields inherently have discontinuous porosity and permeability development such that productive wells commonly adjoin non-productive wells within the same section. Part of this complexity may result from diagenesis, although there also may be depositional facies control on diagenesis. However, little is known about regional facies patterns in the section in Kansas, and specifically, nothing is known of facies and diagenesis in O'Connor Field. Newell (1987) urged that better understanding of regional deposition and diagenesis of these carbonate reservoirs might reduce the risk in the search for stratigraphic plays in these rocks.

Methods of Study

The study examined the 281 ft of core of the Lansing-Kansas City section in the Empire O'Connor #1 well. Core samples were described as to their lithology (e.g., limestone, dolomite, sand, shale), specific carbonate rock texture (e.g., grainstone, mudstone), presence or absence of porosity (and types of porosity), and other diagenetic features (e.g., chert). Specific lithologies (i.e., limestone versus dolomite and chert) were determined by staining with Alizarine red-S. Carbonate rock texture was described using the Dunham (1962) classification. Pore types present were described following the classification of Choquette and Pray (1970). These attributes (lithology, texture, diagenesis) provided a basic description of the fundamental differences between reservoir and non-reservoir rocks in the core. Then, selected samples from both porous and non-porous units were petrographically examined to describe specific particle types present and diagenesis, including porosity development over time.

Last, these sedimentological and diagenetic attributes of the cyclothems in the core were represented on a west-east cross-section of nearby offsetting wells and on structure and isopach (thickness) maps of the Lansing-Kansas City section respectively (Maps 1 & 3). By using the gamma ray-neutron/density logs from offsetting wells and the core descriptions, the cyclothems in the Empire O'Connor #1 well were related to offsetting well logs. In this manner thickness of units in the field were related directly to depositional facies, diagenesis, and oil/gas production.

Heliar #7-3 O'Connor GU-Keith
C N/2 NW NE
Section 17-T24S-R15W
Stafford CO., KS
KG 2042'

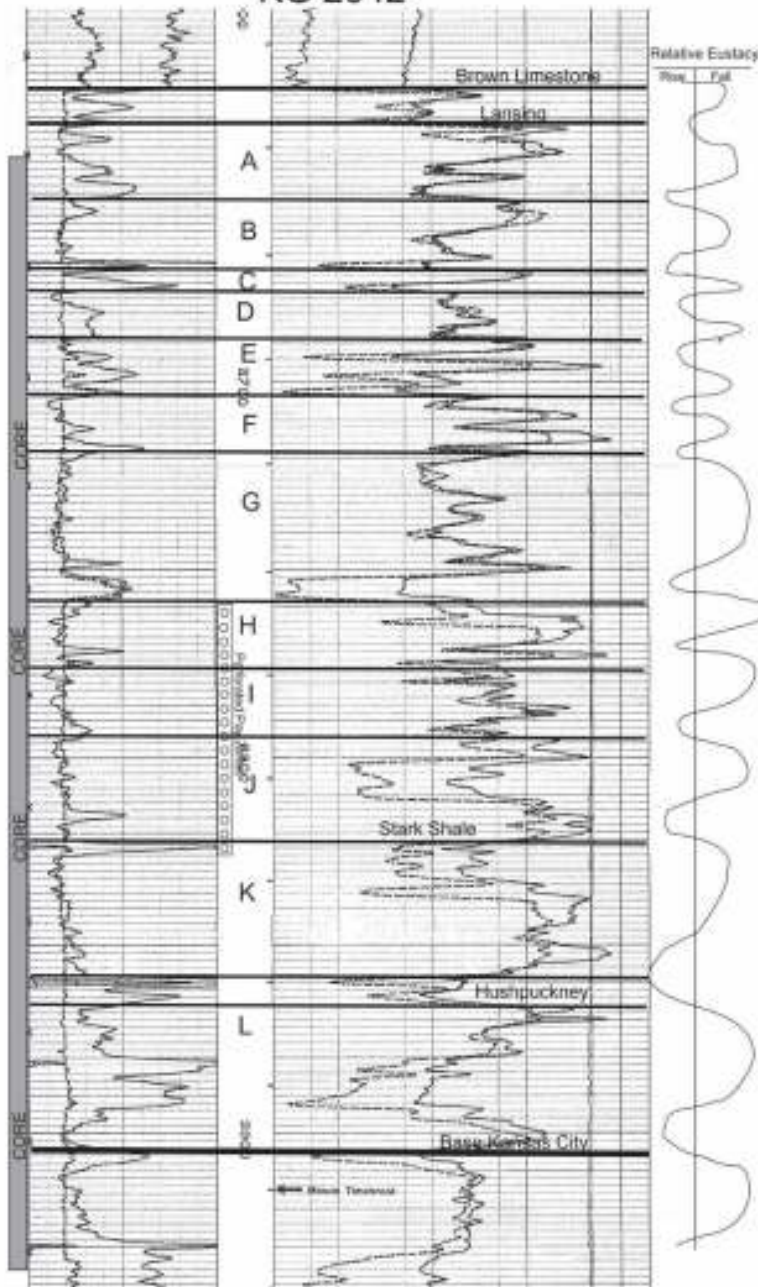


Figure 3. Gamma ray-neutron/density log of off setting well, the letter designated units, the Cored interval and relative eustasy

Robert F. Walters Digital Library

The most complete source for Kansas data

Database updated nightly

Day or Night

You can get to the data as you need it

www.kgslibrary.com

To Join: call 316-265-8676



Providing Quality Seismic Since 1993

Visit our website at
www.paragongeo.com



3500 N. Rock Rd., Bldg. 800, Wichita, KS 67226 316-636-5552
paragon@paragongeo.com



A LEADING SOURCE FOR WELL LOGS

- High Quality Depth Registered Rasters
- On-Line Searchable Catalog
- On-Line Log Header Library
- Two Formats to Choose From
- Discounted Rates Based On Volume
- Best Coverage Available
- No Long Term Contractual Obligation
- Never Have to Delete The Logs You Purchase
- Internet Downloads
- Fast / Economical / Flexible

www.mjlogs.com

1-800-310-6451

Calgary • Denver

WOULD YOU LIKE TO INCREASE YOUR PRODUCTION AT A FRACTION OF THE COST OF HORIZONTAL DRILLING?



Well Enhancement Services, LLC is jetting laterals utilizing new technology and coiled tubing. We now have the ability to place hundreds of gallons of acid hundreds of feet away from the well bore. This allows us to not only enhance existing production but to produce reserves previously unreachable. It has established itself by repeatedly increasing production in both new and existing wells. Contact us for more information, questions or to schedule your next well with **WES**.



“Tap into success.....with WES”

Please Contact Us:

Phone: (785) 625-5155

Fax: (785) 625-4151

Field: (785) 259-4638

wesofhays@hotmail.com
Box 87, Schoenchen, KS 67667

www.**GeoSteering**.com

281-573-0500
info@geosteering.com

Free introductory consultation with modeling: let us demonstrate whether images or propagation resistivity could add value to your well.

Personnel with degrees & 20+ years of oilfield experience

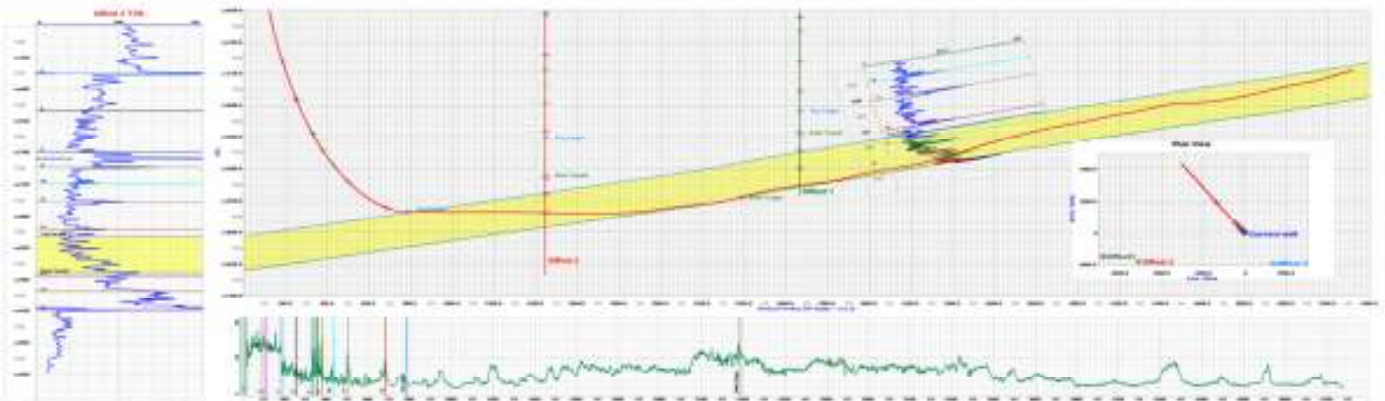
Proprietary software

TST interpretation for GR only jobs

Image displays / interpretation for jobs with azimuthal GR, resistivity or density

Resistivity modelling / interpretation for jobs with LWD propagation resistivity

Real-time (always)





Complete Well Service

Since 1946

P.O. Box 847
Pratt, Kansas 67124

Kenneth C. Gates
President

Kevin C. Gates
Vice President

1-800-660-7974
Fax: 620-672-5902

Member KIOGA /AESC

Equipment yard & field office:
1 3/4 miles North on Highway K-61 from 54 & K-61 Junction

Call us 24
Hours-A-Day
620-672-2531

- Experienced Crews · Rod & Tubing Service · Workover & Completions · Swab Tanks
- Pole Masts-Single and Double Derricks · Air Foam Unit · Monitor & Water Well Drilling
- Reverse Circulating Pump & Power Swivel Equipment · Statewide Oilfield Hauling
- Environmental Cleanup · Vacuum Trucks/Water Trucks · Dirtwork-Dozers, Grader, Backhoe

Hydrovac Excavation Service

- Cleaning cattle guards
- Mud tank cleaning
- Potholing · Trenching
- Pipeline Crossings

www.prattwell.com



Eagle Vision Video
Well Inspection



**BRECKENRIDGE
EXPLORATION
COMPANY, INC**

SEISMIC ACQUISITION

Check us out at www.breckex.com

Breckenridge Exploration Co., Inc.
Highway 180 E
P.O. Box 789
Breckenridge, TX 76424
Bus: (254) 559-7566

Denver Colorado Office
600 17th Street, Ste. 2800 S
Denver, Colorado 80202-5428
Bus: (303) 563-5301
Mob: (254) 559-0587

Sensible Seismic Acquisition in the Mid-Continent and the Rockies



Neuralog

Turning Paper Into Petroleum

Bryan Mills
Regional Sales Manager

Solutions for Today's Geoscientists

- Scan, Print & Digitize - Logs & Maps
- Geological Interpretation
- Master E&P Data Management

1.281.240.2525

bmills@neuralog.com · www.neuralog.com

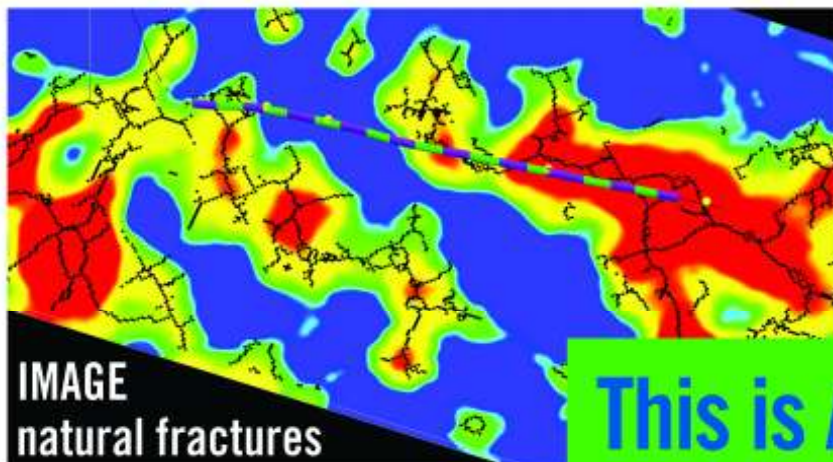
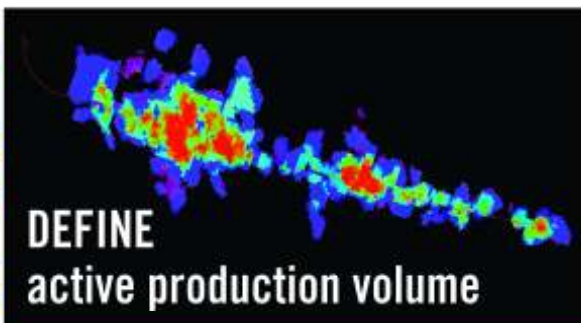
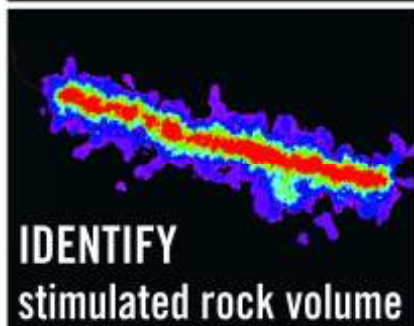


IMAGE
natural fractures

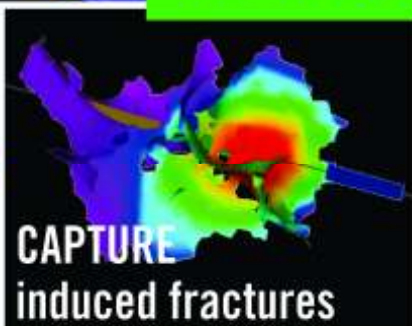


DEFINE
active production volume

This is AMBIENT Seismic.



IDENTIFY
stimulated rock volume



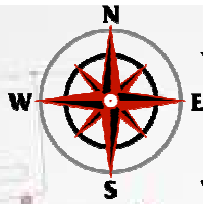
CAPTURE
induced fractures

Global Geophysical's innovative approach to ambient seismic provides direct imaging of acoustic activity in the subsurface. This allows us to identify areas or zones that are acoustically active due to natural fractures, hydraulic stimulation or production-related activities. Our ambient seismic results can be presented as 3D attributes, as discrete volumes of acoustic activity or as Tomographic Fracture Images™.

For more information:
www.globalgeophysical.com/AMBIENT or
Contact us at AMBIENT@globalgeophysical.com

Global Geophysical Services
+1 713-972-9200 www.globalgeophysical.com

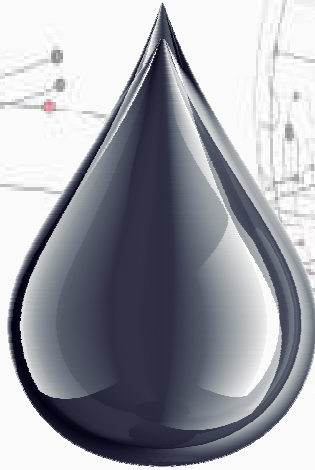




LSGS

LoneStar Geophysical Surveys

It's Real Simple. It's Real Effective.



Locating every last drop.



Superior Seismic Acquisition System



Data Recording 2D, 3D, 4D & VSP



AHV-IV™ Commander 364



Permitting Services



HSE Management System



Front-End Services



Shot Hole Drilling



Brush Clearing



Chainsaw Crews



Heliportable



Submit a bid request online:

www.lstargeo.com

441 So. Fretz Avenue Edmond, Oklahoma 73003 (O) 405.726.8626 (F) 405.285.8521 lsgs1@lstargeo.com

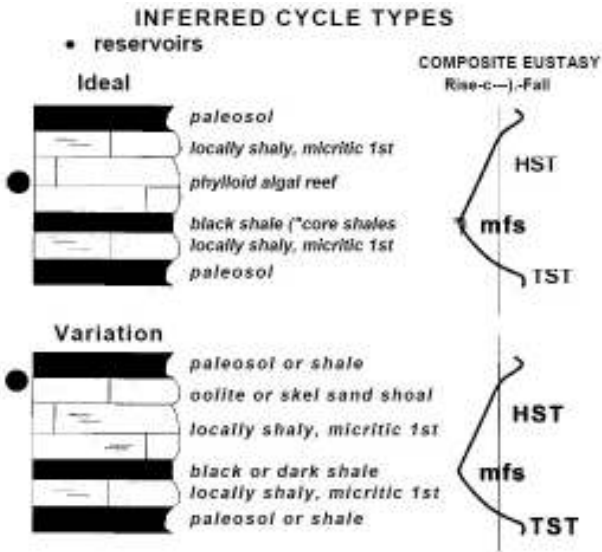


Figure 4. Depositional Cycles

Research findings

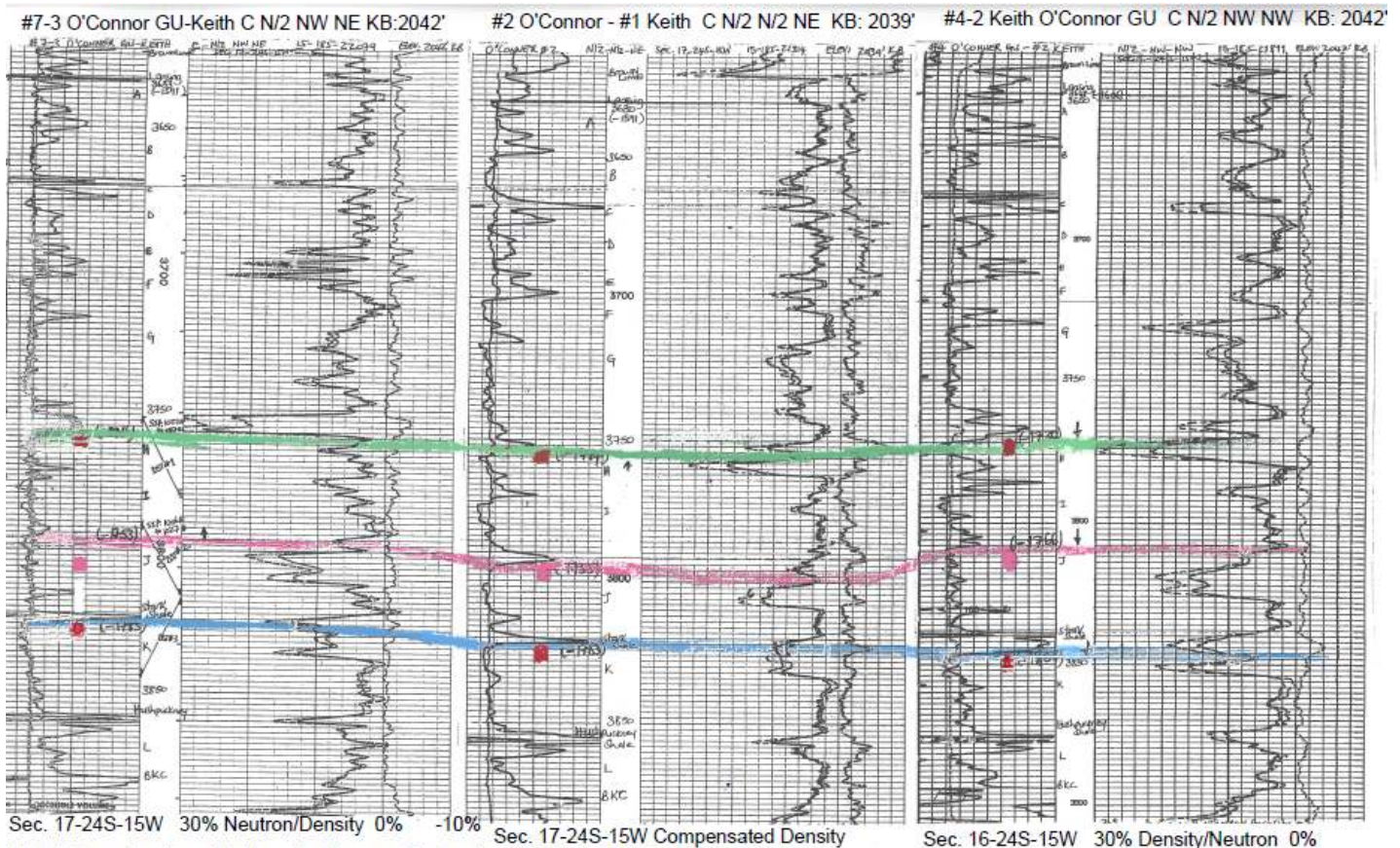
Reservoirs in the LKC section are not laterally extensive. They occur as isolated to locally amalgamated lenses of relatively small size, generally less than a 1/4 section. The Lansing-Kansas City section comprises stacked transgressive (TST) — regressive (HST) cycles that deepen upward, within a cycle, from transitional terrestrial-marine facies or paleosol to dark, deep-water shales (Figure 4). The study revealed main reservoir

facies as the HST phylloid algal reefs and/or the high energy oolite shoals wherein porosity was created by dissolution during post-depositional subaerial exposure (Figure 5). In the O'Connor Field the Lansing-Kansas City section predominantly produces from the section's letter designated zones of "H, J & K". Other reservoirs in the field were identified as Red Eagle and Howard producing gas, Simpson sand producing oil and Arbuckle producing oil and gas.

REPRESENTATIVE CORE LITHOLOGIES



Figure 5-Representative Core Lithologies



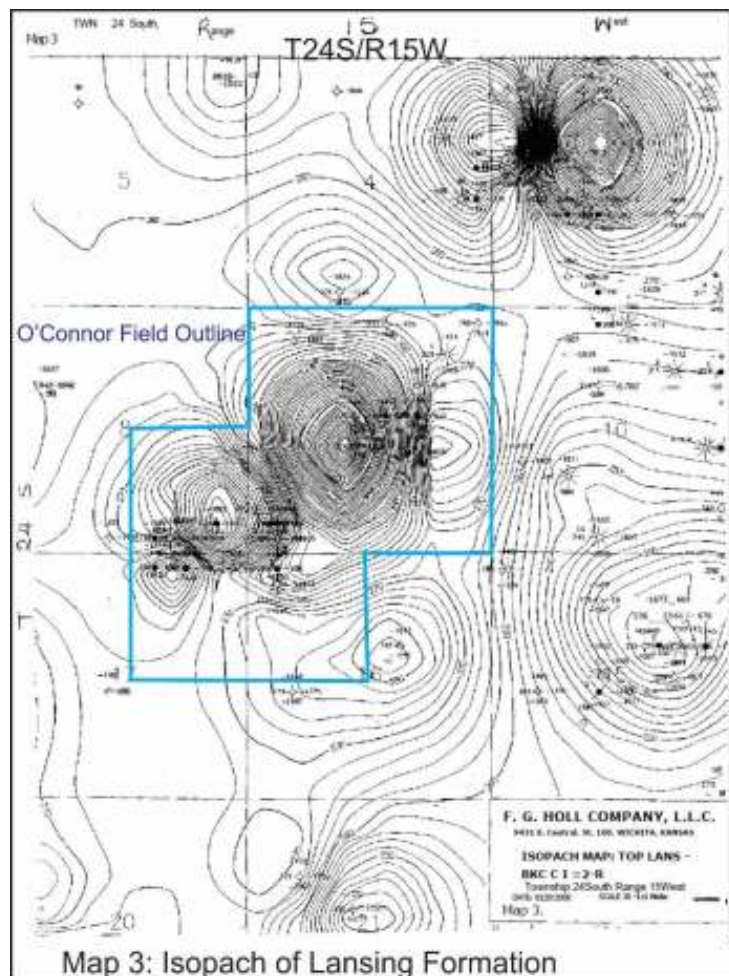
Map 1. Cross Section of the Lansing-Kansas City Section "Units" west to east of the Field

Conclusions

The Lansing-Kansas City section is one of the major oil and gas reservoirs in the O'Connor Field and the immediate area. Production is obviously enhanced in areas where effective porosity exist. Geologists undertaking exploration work within the area of study and nearby acreages should closely study the depositional and diagenetic attributes of the identified productive zones of the Lansing-Kansas City Section in addition to the other reservoirs so as to increase exploration success rate. The study provides an insight to better understanding of the depositional environments and diagenetic processes that influenced reservoir development in the cyclic Lansing-Kansas City section in O'Connor Field. Other Lansing-Kansas City fields can be better evaluated by other geologists based on comparison to the depositional and diagenetic models generated in this study.

References

- Choquette and Pray, 1970, Nomenclature and classification of porosity in sedimentary carbonate rocks; AAPG Bulletin, v. 54, p. 207-250.
- Dunham, 1962, Classification of carbonate rocks according to depositional texture, p. 108-121 in W. Ham (ed.), Classification of Carbonate Rocks, AAPG Memoir 1.
- Heckel, P.H., 1980, Paleogeography of eustatic model for deposition of midcontinent Upper Pennsylvanian cyclothem, in Fouch, T.D. and Magathan, E.R., eds., Paleozoic Paleogeography of West Central United States, Rocky Mountain Paleogeography Symposium. 1; Rocky Mountain Section, SEPM, p. 197-216.
- Heckel, P.H., 1984, Factors in mid-continent Pennsylvanian limestone deposition. N.J., ed., Limestones of the Mid-continent; Tulsa Geological Society, Special Publication No. 2, p. 25 — 50.
- Newell, D. K., 1987, Stratigraphic and spatial distribution of oil & gas production in Kansas; Kansas Geological Survey, Subsurface Geology Series 9, p. 39-40.
- Prather, B.E., 1984, Deposition and diagenesis of an Upper Pennsylvanian cyclothem from the Lansing-Kansas City Groups, Hitchcock County, Nebraska, in N.J. Hyne, ed., Limestones of the Mid-continent; Tulsa Geological Society, Special Publication No.2, p. 393-419
- Prather, B.E., 1985, Depositional facies and diagenetic fabrics of the D-zone cyclothem; Lansing Kansas City Hitchcock county, Nebraska. Kansas Core Workshop notes. Mid-continent meeting, Wichita, Kansas. Kansas Geological Survey. Subsurface Geology Series No. 6, p. 169-177.
- Rascoe, B. & Adler F., 1983, Permo-Carboniferous hydrocarbon accumulation, mid-continent, U.S.A; AAPG Bulletin, v. 67, p. 979-1001.
- Watney, L.W., 1980, Cyclic sedimentation of the Lansing-Kansas City Group in northwestern Kansas and southwestern Nebraska; a guide for petroleum exploration. Kansas Geological Survey Bulletin 220.
- Watney, W.L., 1995, Cycle hierarchy and genetic stratigraphy of Middle and Upper Pennsylvanian strata in the Upper Mid-Continent. Ed. by Hyne, J., 1995. Tulsa Geological Society Special Publication No. 4, p.141-192.
- Yang, W., Bruemmer, M., Turner-Williams, M., 2003, Stratigraphic architecture and processes controlling coeval deltaic, platform carbonate and condensed shelf sedimentation, Upper Pennsylvanian Leavenworth Limestone-Heebner Shale-Plattsmouth Limestone-Heumader Shale minor cyclothem, SE Kansas and NE Oklahoma: in Papers and Abstracts, 2003 AAPG Midcontinent Section Meeting, Tulsa Geological Society, Tulsa, Oklahoma. 31pp.
- Zeller, Doris, 1968, The Stratigraphic Succession in Kansas. Kansas Geological Survey.



PROFESSIONAL DIRECTORY

Kirk Rundle
Consulting Geophysicist


3D Seismic Design, Acquisition to Processing QC.,
Interpretation and Analysis, Subsurface Integration
7340 W. 21st. N., Ste. 100
Wichita, Kansas 67205

Office: 316-721-1421 Fax: 316-721-1843
Email: kirk@rundlegeo.com

Blue Ribbon Drilling, LLC
PO Box 279, Dewey, OK 74029

Phone and Fax: 918-534-2322
John's Cell Phone: 918-440-9639
Larry's Cell Phone: 918-440-9638
Jeff's Cell Phone: 918-440-9647

Email: johnroutree@bratco-operating.com




Scott Banks
Petroleum Geologist
banksbsb@aol.com
Cell: 316.253.8550

1700 N. Waterfront Pkwy.
Bldg. 300 • Suite C
Wichita, KS 67206

Phone: 316.558.5262
Fax: 316.558.5263

WESLEY D. HANSEN
Consulting Geologist

Well site Supervision • Geologic Studies
212 N. Market, Ste 257
Wichita, Kansas 67202
Off: (316) 263-7313
Mobile: (316) 772-6188
whansen4651@sbcglobal.net



KEVIN L. KESSLER
INDEPENDENT/CONSULTING PETROLEUM GEOLOGIST

WELLSITE SUPERVISION • GEOLOGIC RESEARCH
OIL & GAS PROSPECTS
KANSAS & EASTERN COLORADO

MAILING ADDRESS	PHONE
1199 N. PONDEROSA RD.	RES.: (316) 522-7338
BELLE PLAINE, KS 67013	MOBILE: (316) 706-6636
EMAIL: KKESSLER1199@AOL.COM	

KGJ ENTERPRISES

Contract Oil & Gas Accounting &
Office Management

Kathryn G. James, MBA
4278 SW 100th ST.
Augusta, KS 67010

(316) 775-0954
(316) 250-5989
kgjames@onemain.com

ROGER L. MARTIN
Independent Petroleum Geologist

200 E 1st St, Ste 405, Wichita, KS 67202

Office 316-833-2722 Cell: 316-250-6970
KS Field Cell: 316-655-1227
Fax: 316-425-3829
Email: rogermartingeo@yahoo.com

ALFRED JAMES III
Petroleum Geologist
Kansas - Colorado - Utah

4912 E. 29th St. N., Ste. 3, Wichita, Kansas 67220

SIPES # 1111
Office (316) 267-7592
james.alfred21@yahoo.com

M. Bradford Rine


Honorary Life Member—Kansas Geological Society

Licensed Geologist—KS, #204
Registered Professional Geologist—Wyo. # 189
Certified Geologist—A.A.P.G. # 2647
S.I.P.E.S. # 1584 S.P.E. #109833-4

PROSPECT EVALUATION • PROSPECT GENERATION
WELLSITE SUPERVISION • EXPERT TESTIMONY • OPERATIONS
PROPERTY EVALUATION • RESERVOIR STUDIES
DRLG./COMP. CONSULTATION

Suite 415
100 S. Main
Wichita, KS 67202

Office: (316) 262-5418
Fax: (316) 264-1328
Cell: (316) 250-5941



Geotech & Design Services
7171 Highway 6 North, #202
Houston, Texas 77095
Data digitizing, drafting & processing

Tel: (281) 858-7100
Fax: (281) 500-8534
helen.schubert@geotechmaps.com

Helen Schubert www.geotechmap.com
Project / Sales Manager

MELLAND ENGINEERING, INC.
Petroleum Engineering & Geological Consulting

James E. Melland, P.E., P.G.
President

Office: (620) 241-4621 Fax: (620) 241-2621

jamesm@mellandengineering.com
www.mellandengineering.com

P.O. Box 841, McPherson, KS 67460



Steve Van Buskirk
Petroleum Geologist
Van Buskirk Geo-Consulting

15171 Ridgfield Ln
Colorado Springs, CO 80921
and
514 Ramsey
Kiowa, KS 67070

Home: 719-487-8297
Cell: 719-293-2900
Steve@vbcinc.com

Available for Well site work

Covey—*The Well Watchers*

"One Thousand Wells and Counting"

Curtis E. Covey **Wellsite Petroleum Geologist**

Gas Trailer Cell: 316-217-4679
Email: wellsitigeo1@gmail.com

Office: 316-776-0367
6548 Bedford Circle
Derby, Kansas 67037

Gas Detection Trailer & Internet/Phone Communications

We Invite You To join

Kansas Geological Foundation

*\$50.00 membership is
tax deductible*

Call 316-265-8676

*Or send checks to:
Kansas Geological Foundation
212 N. Market, Ste. 100
Wichita, KS 67202*

NOTICE!!!! WSU GEOLOGY CLUB & Papa John's Pizza

Papa John's offered WSU student organizations an opportunity to raise monies for their organizations.

The **WSU Geology Club** is participating
And **YOU** can help them!

When ordering pizza from Papa John's,
Use this code: **WSU004**
(those are zero's, not letter O)

With this code, the customer will receive 40% off their entire online order and WSU's AAPG Student Chapter will receive 10% of the money spent on the order.

**Eating pizza tonight?
Let's help WSU Geology Club!**

Monies raised will be used towards gas money to travel to local schools when they promote the geosciences to grade schools, registration costs for workshops, seminars and AAPG Student Expos, and social and academic events like an upcoming "Lunch and Learn" series next fall.

The Following Are For Sale

Kansas Completion Cards:
Several sets (call for more information)

1 Set Kansas Well Log Bureau Drillers logs
(1920's—1970's—both east & west ranges)

Oklahoma Completion Cards: 2 sets—entire state

New Mexico Completion Cards

North Dakota Completion Cards

Utah Completion Cards

Microfiche Electric Logs

Kansas
Oklahoma
Texas

Geological Office Furniture:

- 8-drawer completion card cabinets
- 7-drawer cabinets
- Map cabinets—metal—2 available
- Map racks—different sizes—6 available

Call: 316-265-8676
Ask for Ted

Kansas Geological Foundation Video / DVD Collection

The KGF has an extensive collection of videos available for check-out at no charge.

Only pay for shipping back.

These are ideal for classroom or general public viewing.

See the web for titles & descriptions
www.kgfoundation.org

Call 316-265-8676

Ask for Janice to check out videos

AAPG Needs You! Professional geoscientists, share your world!

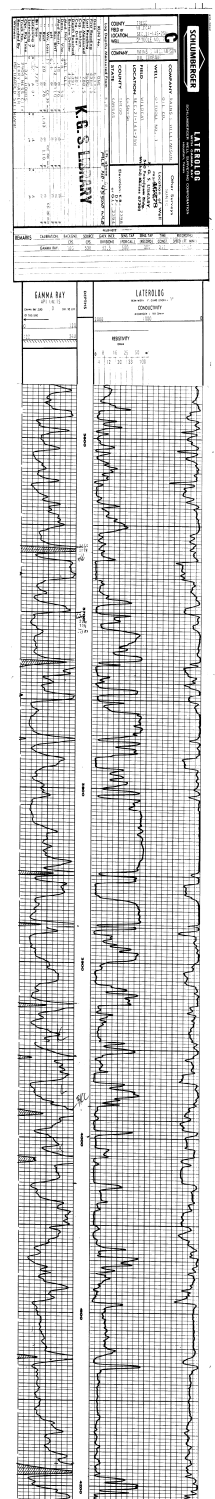
The Mid Continent Section has **17 AAPG Student Chapters**, but only **3 Visiting Geoscientists**...which makes it almost impossible to have a professional geoscientist visit to each school at least once a year or even once every two years. The aim of AAPG's program is to give students a flavor of a professional life in energy resources. It also hopes to encourage dialog between industry and academia.

To be a Visiting Geoscientist bearing the AAPG flag, you are asked to have at least 5 years of experience and make at least one visit per year to a university. It can be a school with an AAPG Student Chapter, or a college/university without one. Your choice.

The Mid Continent schools with Student Chapters are: Missouri University, Fort Hays State University, Iowa State University, Kansas State University, Missouri State University, University of Nebraska, Northwest Missouri State University, Oklahoma State University, University of Oklahoma, University of Arkansas, University of Iowa, University of Kansas, University of Missouri, Columbia University of Tulsa and Wichita State University.

Contact Robbie Gries, co-Chair VGP committee, Denver, if you are interested in learning more.

The KGS Library is pleased to announce a new service



Creating
LAS files
from our logs
or yours

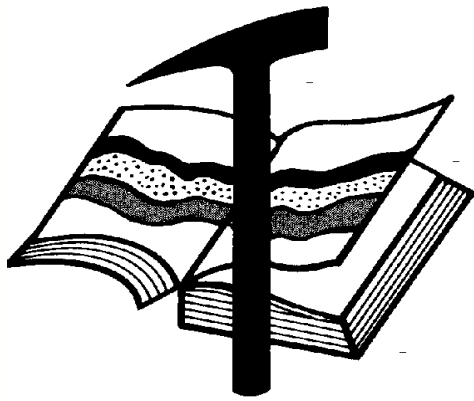
**\$20.00 per
curve!!**

Quick
turn-around

Send us your log file
or tell us which of
ours you would like
converted.

316-265-8676

The Kansas Geological Society maintains its ownership and copyright when converting library log files to LAS



Kansas Geological Foundation

Web Site: www.kgfoundation.org

**212 North Market
Wichita, Kansas 67202**

A not-for-profit educational and scientific corporation

GOALS:

- promote geology and earth science
- preserve geological records
- establish memorials and endowments
- support field trips and seminars
- financial aid and grants to students

PLEASE HELP SUPPORT THE FOUNDATION

Kansas Geological Foundation Services

The Kansas Geological Foundation provides the following services as a part of the organization's commitment to educate the public regarding earth science.

Speaker's Bureau

A list of speakers available to talk about various aspects of geology may be obtained by contacting Janice Bright at the KGS Library, 265-8676. This service is free to the public.

DVD/Videotape Library

The KGF maintains a DVD & videotape library focused primarily on the various fields of earth science. These tapes may be checked out without charge by the public. To obtain a list of tapes, please contact the KGS Library, 212 N. Market, Ste. 100, Wichita, KS 67202, or call Janice Bright at 265-8676.

The Kansas Geological Foundation was founded in March, 1989 as a not-for-profit corporation under the guidelines of section 501(c)(3) of the tax code to provide individuals and corporations the opportunity to further the science of geology. It is dedicated to providing charitable, scientific, literary and educational opportunities in the field of geology for the professional geologist as well as the general public.

KGF can receive in-kind donations through which the donor may receive a tax deduction. Of equal importance, the KGF provides the financial resources to sort, process and file this data at the KGS library. If you have a donation to make, please contact the KGF at 265-8676.

Your tax-deductible membership donation helps to defray the cost of processing donations and to support public education programs about the science of geology. Annual membership begins at \$50.00 per year. Donations of \$100.00 or more are encouraged through the following clubs:

Century Club	\$ 100 to \$ 499
\$500 Club	\$ 500 to \$ 999
Millennium Club	\$1000 to \$5000
President's Club	\$5000 and over

12 Drilling Rigs
To depth of 8,500 ft.



WESTERN KANSAS
SOUTHERN NEBRASKA
EASTERN COLORADO
OKLAHOMA PANHANDLE

For contract information contact:

Blaine Miller
Drilling Manager

316-858-8607 (Direct)
316-267-3241 (Main)

250 N. Water, Ste. 300
Wichita, KS 67202

DUKE
DRILLING COMPANY
ROTARY DRILLING CONTRACTOR

620 Hubbard PO Box 823
Great Bend, KS 67530
Phone 620-793-8366

100 S. Main, Ste. 410,
Wichita, KS 67202
Phone 316-267-1331
Fax 316-267-5180

Free Maps at the library!
Free Maps at the library!

Great Bend (620) 793-5861 Ness City (785) 798-3843 Medicine Lodge (620) 886-5926

Acidizing Available at Medicine Lodge District

Russell (785) 483-2627 Oakley (785) 672-3452

2D & 3D Vibroseis Acquisition
ARAM*AIRES Seismic Recording System

1600 Broadway, Suite 1660 • Denver, CO 80202-4915
(303) 592-5220 • info@lockhartgeo.com
for complete information go to: www.lockhartgeo.com

MBC
WELL LOGGING & LEASING
UNMANNED GAS DETECTORS
MUD LOGGING
CERTIFIED INSTRUMENT TECH

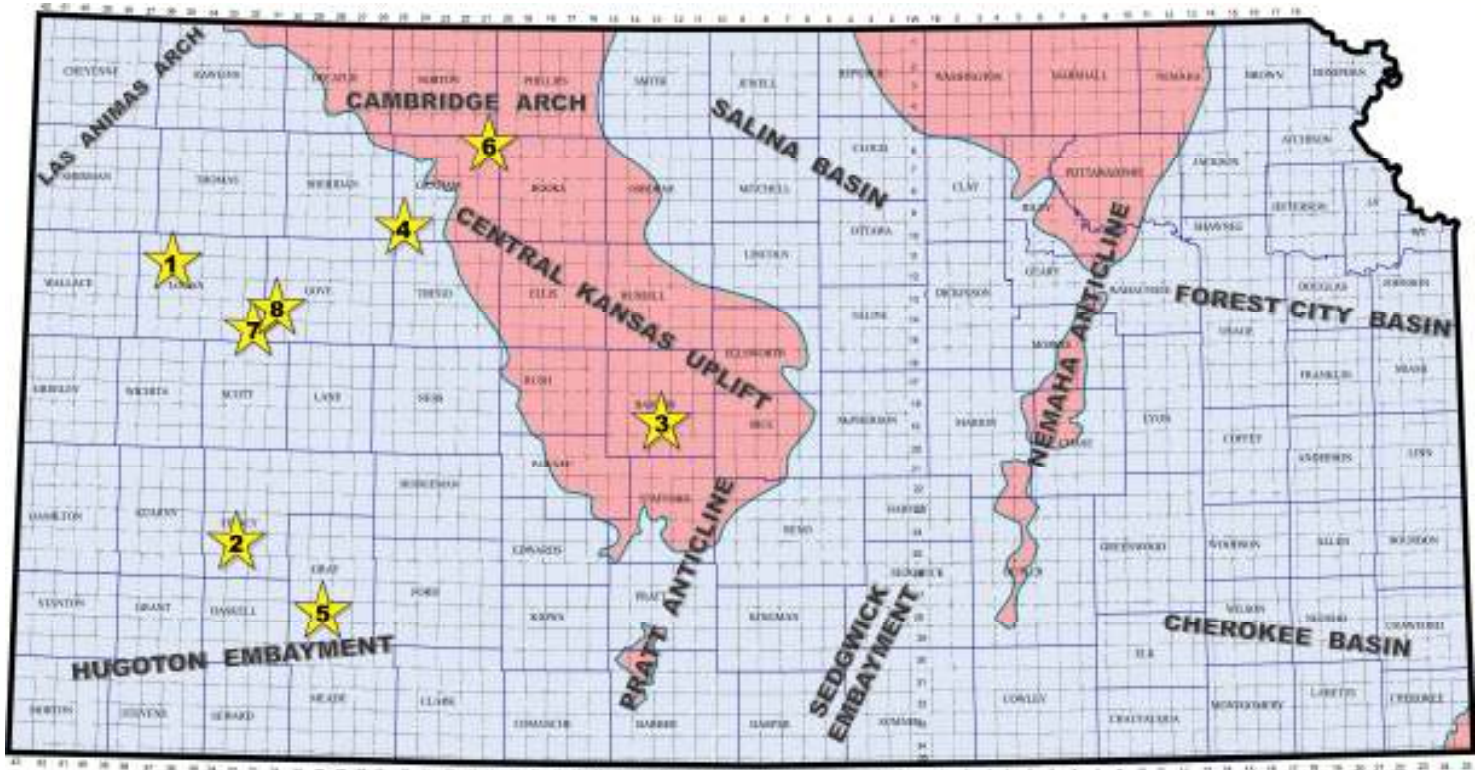
AUSTIN GARNER MARLA GARNER

24-HOUR PHONE (620) 873-2953
MEADE, KANSAS

Wouldn't your ad look good here?

Exploration Highlights

By John H. Morrison, III
Independent Oil & Gas



1-Fossil Resources, LLC, Hays (KS), has discovered new oil reserves in the Lansing – Kansas City formation at their #1 Nelson in the SW/4 of section 33-T12s- R36W, Logan County. The wildcat well was drilled to a total depth of 4,750 ft last December by Pickrell Drilling tools. The well establishes a new unnamed oil field about six miles south and four miles west of the town of Winona, KS. Closest recognized production in the immediate vicinity lies over four miles away in the Winona Field (1977; abd 1983).

2-Merit Energy Company LLC, Dallas (TX), has successfully completed their #1 Brennaman in Finney County for 100 bbls of oil per day, no water. Spotted in the SW/4 of section 22- T25s- R33W, the well confirms production in the Coyote Northeast Field which they opened in July last year. The well is producing crude from Marmaton perforations between 4546 to 4610 ft overall. Rotary total depth was obtained at 5250 ft. Field area is located almost six miles south and two miles west of Garden City, Kansas.

3-RJM Company, Claflin (KS), has established new oil production at their #1 Barton County well near the Barton County landfill. The well was drilled to a depth of 3,530 ft in the NE/4 of section 12- T19s- R13W, about two miles north and east of the City of Great Bend. The new Kath South pool opener is producing oil from the Arbuckle formation at site almost one mile north of the now

abandoned Kath Field (1961), which also produced a small amount of oil from the Arbuckle.

4-Dolomite Resources Corporation, Wichita (KS), is pumping 20 bbls of oil per day, no water, at the #33-1 Riedel in Graham County in the NW/4 of section 33-T10s- R25W. The well establishes the new Foxfire Field a little over four miles southwest of the town of St. Peter. Dolomite Resources hired WW Drilling tools to drill the well to a total depth of 4400 ft. The well is producing crude from Lansing - Kansas City perforations placed from 3956 to 3962 ft. Well site lies nearly one and one-quarter miles southwest of existing LKC oil production in the Ambrose South Field (1982).

5-Falcon Exploration, Inc., Wichita (KS), has discovered new oil deposits one and one-quarter miles northeast of the Renegade Southeast Field (2011) in Gray County. The #1-5 (SW) Carrie Nichols is producing crude oil from an undisclosed zone at site located in the SW/4 of section 5- T28s- R29W, about two miles north and four miles west of Montezuma, Kansas. Operator had indicated on permit to drill notice that the Mississippian formation as a primary zone of interest. Sterling Drilling tools were used to drill the well to a total depth of 5425 ft. Falcon Exploration also opened the Renegade Southeast Field with Wabaunsee gas and LKC oil and gas pays.

6-Jason Oil Company LLC, Russell (KS), has a new pool discovery in Graham County. The #1 Hart – Billips, spotted in the NW/4 of section 29- T6s- R21W, is producing an undisclosed amount of crude oil from the Shawnee (Toronto) and Lansing A zones. WW Drilling tools drilled the well to a total depth of 3863 ft, about one and one-half miles southeast of the GOB Southeast Field (2003) where similar pay exists. The well has been recognized as having established the new High Plains Field eight miles north and four miles west of the town of Nicodemus, Kansas.

7-Prolific Resources LLC, Great Bend (KS), has established the Corinne South Field in southeastern Logan County with the completion of their #1 Randy Rose in the SW/4 of section 3- T15s- R32W. Operator has completed the new pool opener for 50 bbl of oil and 50 bbl water per day with pay coming from the Lansing-Kansas City perforations from 3937 to 3943 ft and Cherokee perforations from 4234 to 4281 ft. WW Drilling tools bottomed the well at a total depth of 4,485 ft in the Mississippian. Field area lies one mile south of the multi-pay Corinne Field (2012) and is about nine miles south and sixteen miles east of Russell Springs, Kansas.

8-Infinity Oil, Inc., Hays (KS), has discovered new Cherokee oil reserves at the #1 Ottley A, located in the SW/4 of section 17- T 14s- R 31W in Gove County. The wildcat well opens the new Thies Ranch North Field eight miles south and sixteen miles west of Gove, Kansas. The new discovery is situated over one mile northeast of the Bridges Northeast Field (2011), where both the Lansing-Kansas City and Cherokee formations have given up oil. Pickrell Drilling tools were used to drill the well to a rotary total depth of 4265 ft.



Plan To Attend The *Foundation's Spring Mixer*

When? Thursday, April 28th

Time? 4:30 PM—8:00 PM

Where? Where else, The Petroleum Club

Who Should Come? Everyone! And Bring a friend too!

Free finger food and drinks (wine & beer)

Special Presentation by David Doyel:

"Discovery and Development of the Scoda Field in
T1S - R36W of Rawlins County, Kansas"

Kansas Geological Foundation Memorials

KGS Member	Date Deceased	Memorial Est.	KGS Member	Date Deceased	Memorial Est.
Dan Bowles	09/89	1990	Claud Sheats	02/02	2002
John Brewer	10/89	1990	Merle Britting	2002	2002
George Bruce	08/89	1990	Harold Trapp	11/02	2002
Robert Gebhart	01/90	1990	Donald M. Brown	11/02	2003
Ray Anderson, Jr.	11/90	1990	Elwyn Nagel	03/03	2003
Harold McNeil	03/91	1991	Robert Noll	09/03	2003
Millard W. Smith	08/91	1991	Benny Singleton	09/03	2003
Clinton Engstrand	09/91	1991	Jay Dirks	2003	2003
M.F. "Ted" Bear	10/91	1991	J. Mark Richardson	02/04	2004
James & Kathryn Gould	11/91	1991	John "Jack" Barwick	02/01	2004
E. Gail Carpenter	06/91	1993	Richard Roby	03/04	2004
Benton Brooks	09/92	1992	Ruth Bell Steinberg	2004	2004
Robert C. Armstrong	01/93	1993	Gordon Keen	03/04	2004
Nancy Lorenz	02/93	1993	Lloyd Tarrant	05/04	2004
Norman R. Stewart	07/93	1993	Robert J. "Rob" Dietterich	08/96	2004
Robert W. Watchous	12/93	1993	Mervyn Mace	12/04	2004
J. George Klein	07/94	1994	Donald Hoy Smith	04/05	2005
Harold C.J. Terhune	01/95	1995	Richard M. Foley	06/05	2005
Carl Todd	01/95	1995	Wayne Brinegar	06/05	2005
Don R. Pate	03/95	1995	Charles B. Moore	09/96	2005
R. James Gear	05/95	1995	Jack Heathman	05/06	2006
Vernon Hess	06/95	1995	Charles Kaiser	09/06	2006
E. K. Edmiston	06/95	1995	Rod Sweetman	08/06	2006
Jack Rine	07/95	1995	Karl Becker	10/06	2006
Lee Cornell	08/95	1995	Frank Hamlin	10/06	2006
John Graves	10/95	1995	Marvin Douglas	12/06	2006
Wilson Rains	10/95	1995	Robert W. Hammond	04/07	2007
Heber Beardmore, Jr.	09/96	1996	Eldon Frazey	04/07	2007
Elmer "Lucky" Opfer	12/96	1996	Pete Amstutz	05/07	2007
Raymond M. Goodin	01/97	1997	Charles Spradlin	05/07	2007
Donald F. Moore	10/92	1997	Donald R. "Bob" Douglass	09/07	2007
Gerald J. Kathol	03/97	1997	Vincent Hiebsch	11/07	2007
James D. Davies	08/88	1997	Glen C. Thrasher	03/08	2008
R. Kenneth Smith	04/97	1997	Peg Walters	06/08	2008
Robert L. Dilts	05/97	1997	Theodore "Ted" Sandberg	07/08	2008
Delmer L. Powers	06/72	1997	James Ralstin	11/08	2008
Gene Falkowski	11/97	1997	Earl Brandt	04/09	2009
Arthur (Bill) Jacques	01/98	1998	Walter DeLozier	05/09	2009
Bus Woods	01/98	1998	Don D. Strong	01/10	2010
Frank M. Brooks	03/98	1998	John Stone	02/10	2010
Robert F. Walters	04/98	1998	Craig Caulk	03/10	2010
Stephen Powell	04/98	1998	Joseph E. Moreland, Jr.	03/10	2010
Deane Jirrels	05/98	1998	Gene Garmon	03/10	2010
William G. Iversen	07/98	1998	James F. Dilts	05/10	2010
Ann E. Watchous	08/98	1998	Jerry Pike	05/10	2010
W.R. "Bill" Murfin	09/98	1998	Donald Hollar	06/10	2010
Donald L. Hellar	11/98	1998	Delbert Costa	08/10	2010
Joseph E. Rakaskas	01/99	1999	John Tanner	08/10	2010
Charles W. Steincamp	02/99	1999	William (Bill) Owen	09/10	2010
Robert and Betty Glover	10/96	1998	Harold (Hal) Brown	10/10	2010
Howard E. Schwerdtfeger	11/98	1999	Edmund G. Lorenz	11/10	2010
W. W. "Brick" Wakefield	03/99	1999	Thomas E. Black	05/11	2011
V. Richard Hoover	01/00	2000	Wayne E. Walcher	07/11	2011
Warren E. Tomlinson	01/00	2000	Henry F. Filson	07/11	2011
James A. Morris	01/00	2000	Thomas Ray	07/11	2011
Eric H. Jager	03/00	2000	Edgar E. Smith	09/11	2012
Kenneth W. Johnson	03/00	2000	Marilyn Messenger	06/13	2013
Dean C. Schaake	03/00	2000	Micheal Mitchell	09/13	2013
Fred S. Lillibridge	05/00	2000	Orvie Howell	11/13	2013
Jerry A. Langrehr	07/00	2000	James Thompson	11/13	2013
Clark A. Roach	07/00	2000	Dick Rowland	09/13	2014
Floyd W. "Bud" Mallonee	10/00	2000	Robbie Thompson	12/13	2014
Ralph W. Ruuwe	09/00	2000	Kris Kennedy	04/14	2015
Robert L. Slamal	02/01	2001	Annette Hedke	02/15	2015
Jerold E. Jespersen	06/01	2001	James Devlin	04/15	2015
William A. Sladek	06/01	2001	Robert Gensch	09/15	2015
Harlan B. Dixon	06/01	2001			
Edward B. Donnelly	08/01	2001			
Richard P. Nixon	02/02	2002			
Robert W. Frensley	12/01	2002			
Gerald W. Zorger	01/02	2002			
Don L. Calvin	03/02	2002			

Robert F. Walters Digital Library

The most complete source for Kansas data

Database updated nightly

Day or Night
You can get to the data as you need it

www.kgslibrary.com

To Join: call 316-265-8676

The screenshot displays the Robert F. Walters Digital Library website interface. It features a search bar at the top with fields for 'Name', 'County', 'Depth', and 'Type'. Below the search bar is a table of search results with columns for 'Well No.', 'County', 'Depth', 'Type', 'Operator', and 'Status'. A detailed record for 'BARBARA OLL CO' is shown, including the well name 'BARBARA OLL CO', operator 'BARBARA OLL CO', and location '2.0471 E. 2050th, Corns, Twp 21S, R. 20E, S. 20E'. The record also includes a 'LATERAL SURVEY' form with fields for 'Well No.', 'County', 'Location', 'Sec.', 'Twp.', 'R.', 'S.', and 'Status'. The form is signed by 'K.E.S. LIBRARY' and 'LATERAL SURVEY'.

CHANGE SERVICE REQUESTED

KGS BULLETIN
 March—April 2016

March 2016

Sun	Mon	Tue	Wed	Thu	Fri	Sat
		1 Tech Talk	2	3	4	5
6	7	8 KGS Board Meeting	9	10	11	12
13	14	15 Tech Talk	16 KGF Board Mtg.	17	18	19
20	21	22	23	24	25	26
27	28	29 Tech Talk	30	31		

April 2016

Sun	Mon	Tue	Wed	Thu	Fri	Sat
					1	2
3	4	5 Tech Talk	6	7	8	9
10	11	12 KGS Board Mtg.	13 KGF Board Mtg.	14	15	16
17	18	19 Tech Talk	20	21	22	23
24	25	26	27	28 Foundation Spring Mixer	29	30